



FOLLOW THE YELLOW BOAT ROAD

**PENNICOTT
WILDERNESS
JOURNEYS**



WINEGLASS BAY CRUISES

Accessibility Guide





Vessel Accessibility

Schouten Passage II is a Tasmanian built, 150 seat catamaran ideal for exploring the east coast of Tasmania. The spacious enclosed vessel contains comfortable seating across two fully air-conditioned lounge areas - The Vista Lounge and The Sky Lounge.

- **The Vista Lounge (downstairs)** is wheelchair accessible. There is an accessible toilet on the left side of the boat and space to store a wheelchair behind the last row of seats. If a guest needs to remain seated in their wheelchair, we place the wheelchair behind the last rows of seats on the left side of the boat next to the window to ensure good viewing and stability.
- **The Sky Lounge (upper level)** cannot accommodate guests in wheelchairs and it may not suit guests with limited mobility. Access to the upper deck is by staircase only (12 stairs in total, each is 210mm high and 240mm deep) and there are access and space limitations. We have a duty of care for all our guests and it's important that guests can move independently throughout the vessel, especially in the unlikely event of an emergency.

The vessel has windows around the entire cabin and our skipper will manoeuvre the vessel so our guests can take in the sights without moving.

The departure and return point for our tour is 61 Jetty Rd, Coles Bay or Freycinet Lodge. There are several stairs to get down to the jetty at Freycinet Lodge which means it is not wheelchair accessible. We invite guests with wheelchairs to board from the Coles Bay jetty.

Our carpark is 50m from the Wineglass Bay Cruises office and there is vehicle access to within a couple of metres of our boarding ramp. We have chairs we can put out whilst waiting

to board and priority boarding can be requested to ensure a suitable seat is available. For those with mobility issues, it is recommended to sit at the back left of the boat as it is more stable, the accessible toilet is close and the staff in the galley are right there to happily help deliver any snacks or drinks throughout the day.

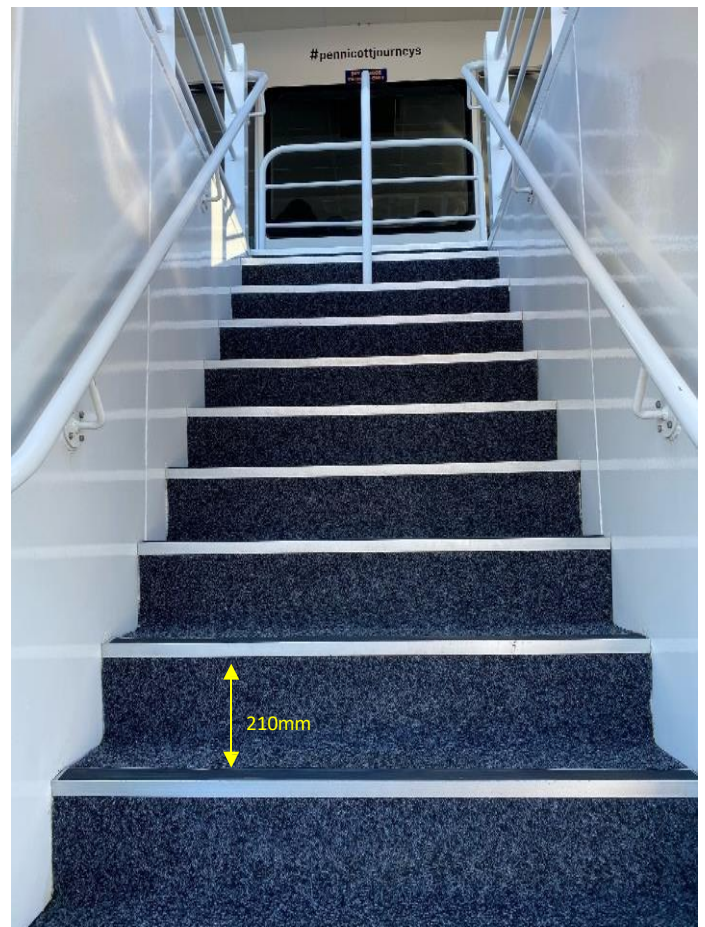
Boarding is via a gangway which is 750mm wide. The Coles Bay jetty is not a floating jetty and the gradient of the gangway can vary due to tides. The lip onto the gangway is 150mm high and the lip at the end of the ramp onto the boat can be 200mm high. There is a rail on both sides of the gangway. Our crew are available to assist with boarding if need be.

There is a 110mm step into the Vista Lounge from the back deck of Schouten Passage II and an 80mm step into the accessible toilet which is off the deck. The step to the Vista Lounge front deck is 300mm high. There are 120 individual seats in the Vista Lounge, in rows with two aisles. Each aisle is 750mm wide. The seats are 440mm wide and 460mm deep with 510mm of leg room.

The Wineglass Bay Cruises office is accessible via ramp which is 1,100mm wide, however, only one member of the party is required to check in. The office door is 850mm wide.



Boarding ramp



Stairs to Sky Lounge (not wheelchair accessible)



Entry to Vista Lounge (this is wheelchair accessible)



Accessible bathroom for Vista Lounge guests

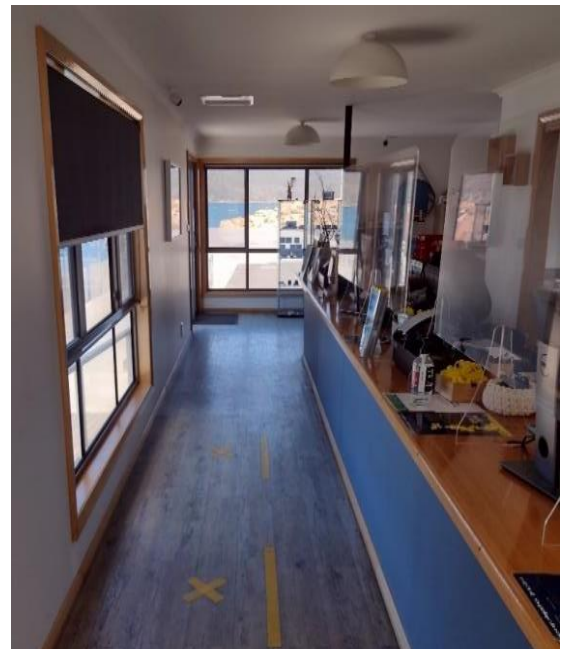
Coles Bay jetty car park



Access to jetty from car park, guests are most welcome to be dropped off next to the office



Access to the office



Inside the office